

ellen
wille
THE HAIR YOU LOVE

ellen
wille
THE HAIR YOU LOVE

www.ellen-wille.de

ELLEN'S
TRENDY HEADWEAR & ACCESSORIES
HEADWEAR



THE HEADWEAR YOU LOVE

[DE] Akzente setzen, Stimmungen unterstreichen. Mode ist pure Emotion und Headwear perfekt dafür geeignet, Ihren Stil zu unterstreichen. Die Ellen's Headwear Collection fängt die vielseitigen Facetten und Trends bei Hüten, Caps und Schals ein und spiegelt sie in lebendigen Farben und raffinierten Mustern wider. Lernen Sie die aktuellen Designs kennen und entdecken Sie beliebte Klassiker in neuem Gewand! Erleben Sie „the headwear you love“!

[EN] Highlighting accents, emphasising moods. Fashion is pure emotion, and headwear is the perfect highlight for your style. The Ellen's Headwear Collection captures the many aspects and trends in hats, caps and scarves and reflects them in vibrant colours and sophisticated patterns. Get to know the latest designs and discover popular classics with a new twist! Experience „the headwear you love“!

[FR] Réhaussez votre look. Adoptez les tendances de l'année. La mode véhicule des émotions et les couvre-chef sont parfaits pour affirmer votre style. La collection Ellen's Headwear s'inspire des fashion-weeks qu'elle reflète à travers ses chapeaux, casquettes et foulards dans des couleurs vives et des motifs sophistiqués. Découvrez nos nouveautés et nos grands classiques sous un nouveau jour ! Expérimentez « the headwear you love » !





- A** Shell: 95% Polyester, 5% Elastane
Lining: 95% Viscose (Viscose extracted from Bamboo), 5% Elastane
- B** Shell: 94% Viscose, 6% Elastane
Lining: 94% Viscose (Viscose extracted from Bamboo), 6% Elastane
- C** Shell: 67% Viscose, 26% Polyester, 7% Elastane
Lining: 95% Viscose (Viscose extracted from Bamboo), 5% Elastane
- D** Shell & Lining: 92% Cotton, 8% Elastane
- E** Shell & Lining: 94% Viscose (Viscose extracted from Bamboo), 6% Elastane



GOGA

COLOUR: black white striped

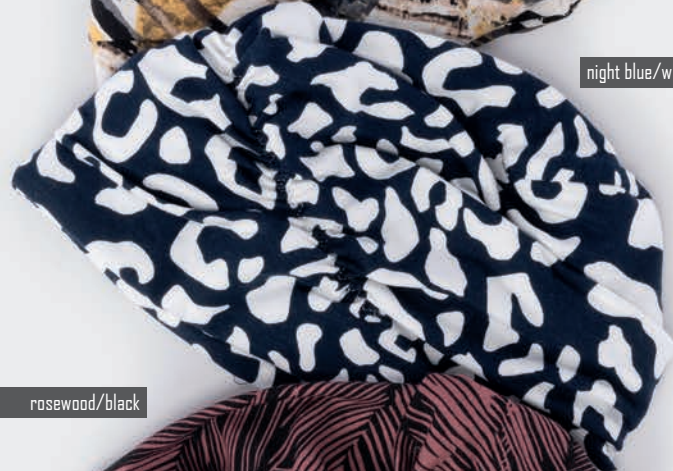




A sahara



night blue/white A



A rosewood/black



romantic B



A 94% Viscose, 6% Elastane

B 94% Viscose (Viscose extracted from Bamboo), 6% Elastane

MERAL





A 100% Cotton
B 95% Cotton, 5% Elastane

COMFORT CAP



COLOUR: grey

NICA



light coffee

cream

grey

100% Paper



STYLING TIP: NICA in grey / hairpiece SAGE in nut brown





YANCY

STYLING TIP: YANCY in camel / wig CR in chocolate rooted

50% Cotton, 50% Polyester



black



camel



nature





STYLING TIP: MAVA in black / hairpiece VANILLA HI in light blonde



50 % Cotton, 50 % Linen

MAVA

STYLING TIP: MAVA in creme / hairpiece VANILLA HI in light blonde



STYLING TIP: VENICE in marine / wig ANIMA in lightbernstein rooted

VENICE



80% Paper.
20% Polyester



black

antic pink

khaki

taupe

burgundy

marine

jeans

grey

95% Viscose (Viscose extracted from Bamboo),
5% Elastane



STYLING TIP: MAGENA in khaki / hairpiece CAYENNE in chaco brown

MAGENA





STYLING TIP: TALA in jeans / hairpiece SAGE in light blonde



TALA

COLOURS TALA



- A 50 % Cotton, 50 % Polyester
- B 95 % Cotton, 5 % Elastane
- C 95 % Polyester, 5 % Elastane
- D 95 % Viscose, 5 % Elastane



TALA



95% Viscose (Viscose extracted from Bamboo), 5% Elastane

TALA SOFT

STYLING TIP: TALA in coral / hairpiece VANILLA HI in sandy blonde



AMA FINA



A 100 % Cotton B 100 % Viscose

A coral

A sweetheart

A black abstract

B tiger

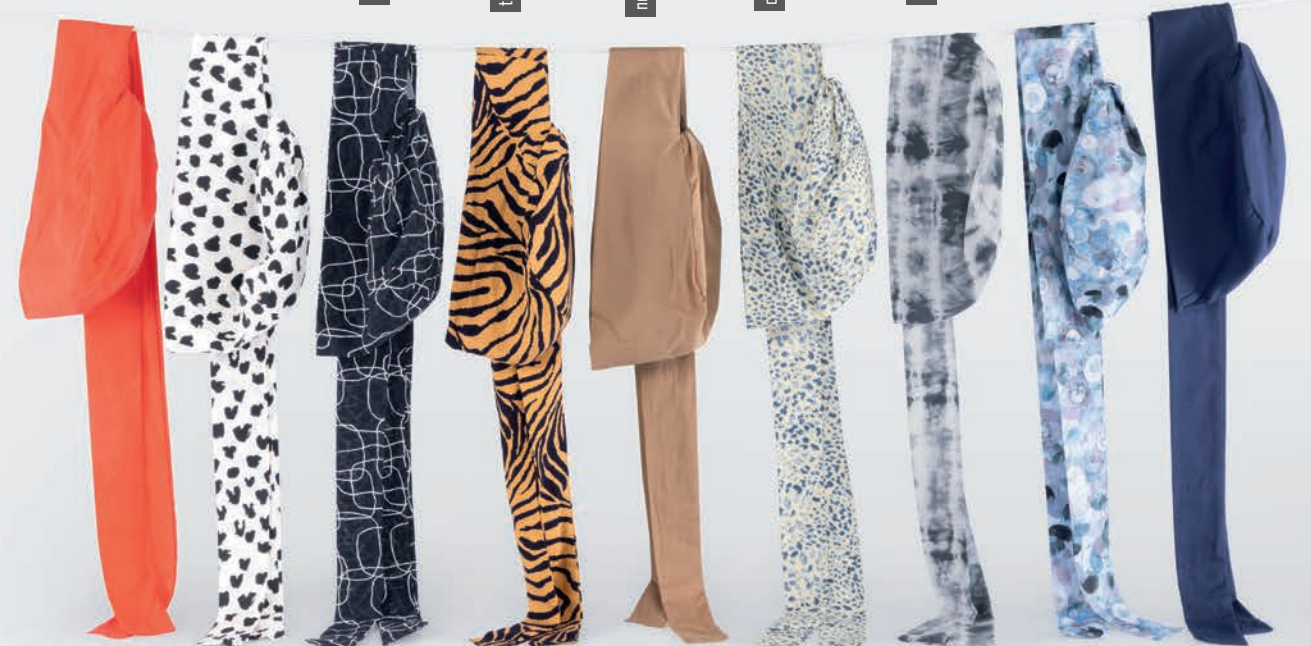
A nougat

A cat/blue white

B marble grey

A flowers blue

A marine





A black

B mint

B taupe

B coral

B olive

B orange

B lavender



COLOUR: lavender

CAPRI

- A Brim & Cap: 95% Cotton, 5% Elastane
- B Brim: 95% Cotton, 5% Elastane / Cap: 100% Cotton



COLOUR: coral





COLOUR: pink

COLOUR: white



MONA



pink

black

royal

white

95% Polyester, 5% Elastane

STYLING TIP: MONA in pink / wig SING MOND PART in chocolate rooted



graffiti

taupe

white blossom

flora

jeans white

80 % Cotton, 20 % Linen

Charmant in jeglicher Hinsicht.
 Variabel durch abnehmbaren Schild.
 Charming in so many ways.
 Variable styling thanks to the removable shield.

LONATA



COLOUR: white blossom



STYLING TIP: LONATA in taupe / hairpiece SAGE in nut brown



MISU



STYLING TIP: MISU in antique rose/leaves / hairpiece CAYENNE in nut brown



A Shell & Lining: 100% Cotton
B Shell: 100% Viscose / Lining: 100% Cotton



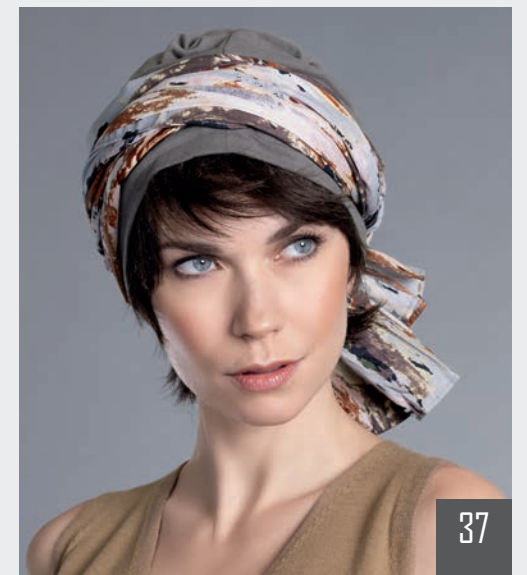
GARBO



STYLING TIP: GARBO in grey / hairpiece MINT in medium brown



- A Cap: 95% Cotton, 5% Elastane / Ribbon: 65% Cotton, 35% Viscose
- B Cap: 95% Cotton, 5% Elastane / Ribbon: 100% Cotton
- C Cap: 95% Cotton, 5% Elastane / Ribbon: 100% Viscose





95% Viscose (Viscose extracted from Bamboo).
5% Elastane

ANOKI



COLOUR: coral



A 100% Cotton
B 95% Cotton, 5% Elastan

KIONA



COLOUR: black white



COMPLETE YOUR STYLE

HEADWEAR & ACCESSORIES



Shell: 99% Jute fiber, 1% Synthetic fiber
Lining: 100% Polyester



nature



wig CR1 in cherryred mix

JUTE BAG

COLOUR: nature

COLOUR: navy/nature

CAIRO



scarf

180 x 70 cm
100% Linen

nature

navy/nature

nature/striped

black





BRAID BAND

95% Cotton, 5% Elastane

print/blue

zebra/black

wild cat/taupe

snake/grey

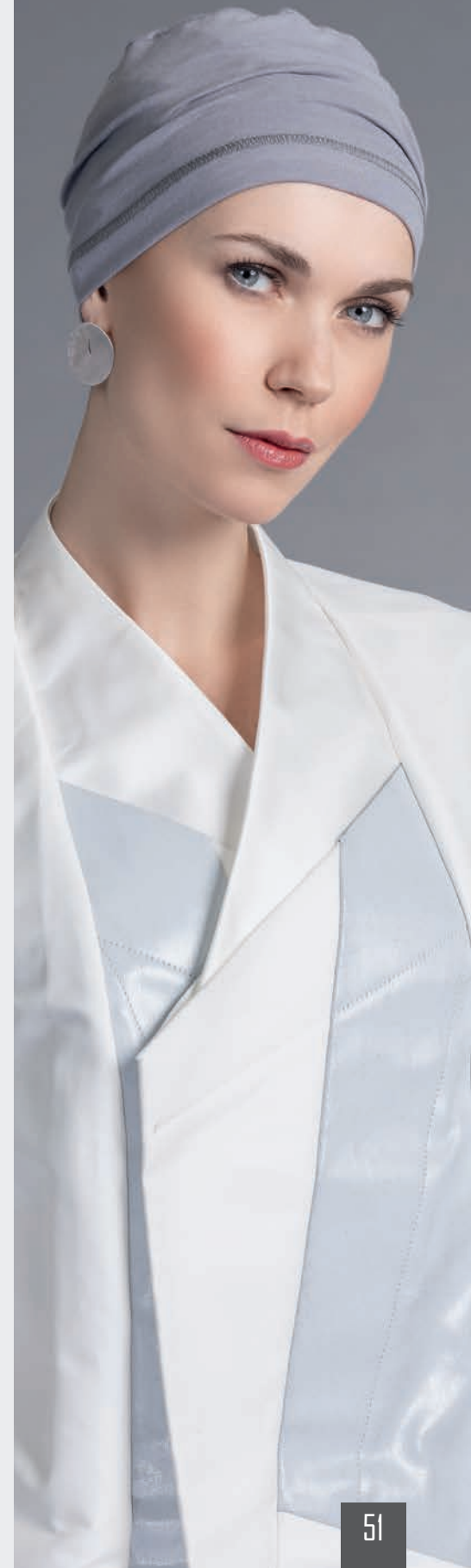


STYLING TIP: BRAID BAND in print/blue / wig ANIMA in lightberstein rooted

EASY FIT



95% Cotton, 5% Elastane



NAMIDA



black

grey

marine

burgundy

antik pink

vanilla

95% Viscose (Viscose extracted from Bamboo),
5% Elastane



WEAR REVERSE

marine/jeans

grey/red

marine/khaki

black/anthrazit

95% Viscose (Viscose extracted from Bamboo),
5% Elastane



COLOUR: black/anthrazit

GO



STYLING TIP: GO in marine/jeans / hairpiece CAYENNE in medium brown



- A** Shell: 100 % Cotton /
Lining: 95 % Viscose (Viscose extracted from Bamboo), 5 % Elastane
- B** Shell: 65 % Polyester, 30 % Viscose, 5 % Elastane /
Lining: 95 % Viscose (Viscose extracted from Bamboo), 5 % Elastane
- C** Shell: 77 % Polyester, 20 % Cotton, 3 % Elastane /
Lining: 95 % Viscose (Viscose extracted from Bamboo), 5 % Elastane
- D** Shell: 97 % Polyester, 3 % Elastane /
Lining: 95 % Viscose (Viscose extracted from Bamboo), 5 % Elastane

AVANI





AMA



WEAR REVERSE

marine print

marine

WEAR REVERSE

paisley bordeaux

black/white



95% Cotton, 5% Elastane

STYLING TIP: AMA in marine / hairpiece VANILLA HI in medium brown



NAVAJO



- A** Shell: 94 % Viscose, 6 % Elastane
Lining: 94 % Viscose (Viscose extracted from Bamboo), 6 % Elastane
- B** Shell: 71 % Polyester, 24 % Viscose, 2 % Elastane
Lining: 94 % Viscose (Viscose extracted from Bamboo), 6 % Elastane
- C** Shell: 95 % Polyester, 5 % Elastane
Lining: 94 % Viscose (Viscose extracted from Bamboo), 6 % Elastane





MIWOK



- A** Shell: 80 % Polyester, 18 % Viscose, 2 % Elastane
Lining: 94 % Viscose (Viscose extracted from Bamboo), 6 % Elastane
- B** Shell: 63 % Viscose, 30 % Polyester, 7 % Elastane
Lining: 94 % Viscose (Viscose extracted from Bamboo), 6 % Elastane
- C** Shell: 80 % Cotton, 20 % Polyester
Lining: 94 % Viscose (Viscose extracted from Bamboo), 6 % Elastane





Shell: 100 % PU Leather
Lining: 100 % Cotton

STYLING TIP: TAMA in karo grey / wig SMOKE MONO PART in chocolate mix



TAMA

HAIRPIECE SAGE
15 - 23 CM



dark brown, medium brown,
light brown, nut brown,
ginger blonde, dark blonde,
gold blonde, natural blonde,
light blonde



STYLING TIP
hairpiece SAGE in light blonde
combined with turban TALA in jeans

SAGE
HAIRPIECE

MINT
HAIRPIECE

HAIRPIECE MINT
8 - 12 CM



black, dark brown, medium brown,
mahogany brown, light brown,
nut brown, ginger blonde,
dark blonde, gold blonde,
natural blonde, **light blonde**,
platinum blonde, pearl grey,
light grey, silver grey



STYLING TIP
hairpiece MINT in light blonde
combined with turban KIONA in black grey



HAIRPIECE CAYENNE
30 - 36 CM



dark brown, medium brown,
choco brown, nut brown,
sandy blonde, light blonde,
pastel blonde, auburn



STYLING TIP
hairpiece CAYENNE in choco brown
combined with turban MAGENA in khaki



CAYENNE
HAIRPIECE

VANILLA HI
HAIRPIECE



HIGH HEAT FIBER

HAIRPIECE VANILLA HI
18 - 33 CM



dark brown, medium brown,
choco brown, nut brown, dark blonde,
sandy blonde, light blonde



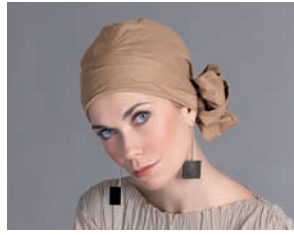
STYLING TIP
hairpiece VANILLA HI in sandy blonde
combined with turban TALA SOFT in burgundy

OVERVIEW

turbans



Ama 58-59



Ama Fina 26-27



Anoki 38-39



Avani 56-57



Comfort Cap 8-9



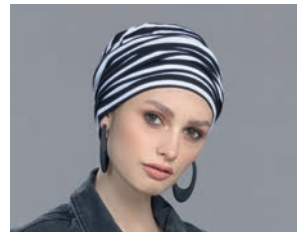
Easy Fit 50-51



Garbo 36-37



Go 54-55



Goga 4-5



Kiona 40-41



Magena 18-19



Meral 6-7



Misu 34-35



Miwok 62-63



Namida 52-53



Navajo 60-61



Tala 20-23



Tala Soft 24-25

ELLEN'S
HEADWEAR

hats & caps



Capri 28-29



Lonata 32-33



Mava 14-15



Mona 30-31



Nica 10-11



Tama 64-65



Venice 16-17



Yancy 12-13

hairpieces



Cayenne 68



Mint 67



Sage 66



Vanilla Hi 69

accessories



Braid Band 48-49



Cairo 46-47



Jute Bag 44-45

ellen
wille
THE HAIR YOU LOVE